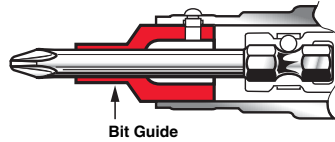


Bit Guides
Coiffes guide-lame
Klingen-Führungshülsen
Guías de punta
Guida punta



Ref. No.	No.	mm
5RA-P730-1	1	50
5RA-P730-2	2	50
5RA-P730-3	3	50
102A60-P730-1	1	90
102A60-P730-2	2	90
102A60-P730-3	3	90

Bit holders, 1/4" hex x 1/4" hex
Porte-embouts, 1/4" hex. x 1/4" hex.
Klingenhalter, 1/4" Skt. x 1/4" Skt.
Portapuntas, 1/4" hex x 1/4" hex
Portapunta, ex. 1/4" x ex. 1/4"



Ref. No.	L (mm)
STANDARD	
631	54
631-4	102
631-6	152
MAGNETIC	
M-630	54
M-631-4	102
M-631-6	152



Spindle Accessories

Accessoires de Broche
Klingen und Steckschlüssel
Accesorios de Accionamiento
Accessori, Punte e Bussole

Phillips®
(1/4" hex)



Ref. No.	No.	mm
EXTRA HARD ★★		
XPB070	0	25
XPB071	1	25
XPB072	2	25
XPB073	3	25
XPB074	4	32
MEDIUM HARD ★		
PB070	0	25
PB071	1	25
PB072	2	25
PB073	3	25
PB074	4	32
ACR ISO-TEMP		
XPB071ACR	1	25
XPB072ACR	2	25
XPB073ACR	3	25



Ref. No.	No.	mm	Ø
EXTRA HARD ★★			
XP-161	1	50	4.8
XP-162	2	50	6.4
XP-163	3	50	8.0
XP-221	1	70	4.8
XP-222	2	70	6.4
XP-223	3	70	8.0
MEDIUM HARD ★			
P-161	1	50	4.8
P-162	2	50	6.4
P-163	3	50	8.0
P-221	1	70	4.8
P-222	2	70	6.4
P-223	3	70	8.0

Pozidriv®
(1/4" hex)



Ref. No.	No.	mm
EXTRA HARD ★★		
XPZB071	1	25
XPZB072	2	25
XPZB073	3	25
LXPZB072	2	38
ELXPZB072	2	51
MEDIUM HARD ★		
PZB071	1	25
PZB072	2	25
PZB073	3	25
LPZB072	2	38
ELPZB072	2	51



Ref. No.	No.	mm	Ø
EXTRA HARD ★★			
XPZ-161	1	50	4.8
XPZ-162	2	50	6.4
XPZ-163	3	50	8.0
XPZ-261	1	70	4.8
XPZ-262	2	70	6.4
XPZ-263	3	70	8.0
XPZ-361	1	90	4.8
XPZ-362	2	90	6.4
XPZ-363	3	90	8.0
XPZ-661	1	152	4.8
XPZ-662	2	152	6.4
XPZ-663	3	152	8.0
MEDIUM HARD ★			
PZ-161	1	50	4.8
PZ-162	2	50	6.4
PZ-163	3	50	8.0
PZ-261	1	70	4.8
PZ-262	2	70	6.4
PZ-263	3	70	8.0
PZ-361	1	90	4.8
PZ-362	2	90	6.4
PZ-363	3	90	8.0
PZ-661	1	152	4.8
PZ-662	2	152	6.4
PZ-663	3	152	8.0

For further details on our Accessory Range, please see our Accessories catalogue No. XL32515.

Pour connaître l'ensemble de notre Gamme Accessoires, vous pouvez consulter notre catalogue Accessoires No. XL32515.

Weitere Informationen zu Ingersoll Rand Original-Zubehör finden Sie in unserem neuen Zubehör-Katalog (Nr. XL32515).

Para conocer la totalidad de nuestra Gama Accesorios, puede consultar nuestro catálogo Accesorios No. XL32515.



Per conoscere l'intera gamma dei nostri accessori, consultare il nostro Catalogo Accessori N. XL32515.

Torx® (1/4" hex)  

Ref. No.	Ref. No.	No.	mm
EXTRA HARD ★★	MEDIUM HARD ★		
XIBT07	IBT07	7	25
XIBT08	IBT08	8	25
XIBT09	IBT09	9	25
XIBT10	IBT10	10	25
XIBT15	IBT15	15	25
XIBT20	IBT20	20	25
XIBT25	IBT25	25	25
XIBT27	IBT27	27	25
XIBT30	IBT30	30	25
XIBT40	IBT40	40	25

Torx® (1/4" hex)  

Ref. No.	Ref. No.	No.	mm
EXTRA HARD ★★	MEDIUM HARD ★		
XT07	T07	7	50
XT08	T08	8	50
XT09	T09	9	50
XT10	T10	10	50
XT15	T15	15	50
XT20	T20	20	50
XT25	T25	25	50
XT27	T27	27	50
XT30	T30	30	50
XT40	T40	40	50
XTB07	TB07	7	90
XTB08	TB08	8	90
XTB09	TB09	9	90
XTB10	TB10	10	90
XTB15	TB15	15	90
XTB20	TB20	20	90
XTB25	TB25	25	90
XTB27	TB27	27	90
XTB30	TB30	30	90
XTB40	TB40	40	90

Torx® tamper resistant (1/4" hex)  

Ref. No.	No.	mm
TTR-07	7	25
TTR-08	8	25
TTR-09	9	25
TTR-10	10	25
TTR-15	15	25
TTR-20	20	25
TTR-25	25	25
TTR-27	27	25
TTR-30	30	25
TTR-40	40	25

Tri-Wing® (1/4" hex)  

Ref. No.	Point no.	mm
TWB-0	0	25
TWB-1	1	25
TWB-2	2	25
TWB-3	3	25
TWB-4	4	25
TWB-5	5	25

Tri-Wing® (1/4" hex)  

Ref. No.	No.	mm
TW-0	0	32
TW-1	1	32
TW-2	2	32
TW-3	3	32
TW-4	4	32
TW-5	5	32
TW-6	6	32
TW-7	7	32
TW-8	8	32

Torq-set® (1/4" hex)  

Ref. No.	No.	mm
TSO-0	0	25
TSO-1	1	25
TSO-2	2	25
TSO-3	3	25
TSO-4	4	25
TSO-5	5	25
TSO-6	6	25
TSO-8	8	25
TSO-10	10	25

Torq-set® (1/4" hex)  

Ref. No.	No.	mm
TSI-0	0	32
TSI-1	1	32
TSI-2	2	32
TSI-3	3	32
TSI-4	4	32
TSI-5	5	32
TSI-6	6	32
TSI-8	8	32
TSI-10	10	32

Allen head (1/4" hex)  

Ref. No.	Ref. No.	mm
EXTRA HARD ★★	MEDIUM HARD ★	
HXB1.5	HB1.5	1.5 mm
HXB2	HB2	2 mm
HXB2.5	HB2.5	2.5 mm
HXB3	HB3	3 mm
HXB4	HB4	4 mm
HXB5	HB5	5 mm
HXB6	HB6	6 mm
HXB8	HB8	8 mm
HXB0825	HB0825	5/64"
HXB083	HB083	3/32"
HXB084	HB084	1/8"
HXB0845	HB0845	9/64"
HXB105	HB105	5/32"
HXB106	HB106	3/16"
HXB107	HB107	7/32"
HXB108	HB108	1/4"
HXB109	HB109	5/16"
HXB110	HB110	3/8"

Allen head (1/4" hex)  

Ref. No.	Ref. No.	mm
EXTRA HARD ★★	MEDIUM HARD ★	
HXM1.5	HM1.5	1.5 mm
HXM2	HM2	2 mm
HXM2.5	HM2.5	2.5 mm
HXM3	HM3	3 mm
HXM4	HM4	4 mm
HXM5	HM5	5 mm
HXM6	HM6	6 mm
HXM8	HM8	8 mm
HX132	H132	1/16"
HX1325	H1325	5/16"
HX133	H133	3/32"
HX134	H134	1/8"
HX1345	H1345	9/64"
HX135	H135	5/32"
HX136	H136	3/16"
HX137	H137	7/32"
HX138	H138	1/4"

Slotted (1/4" hex)



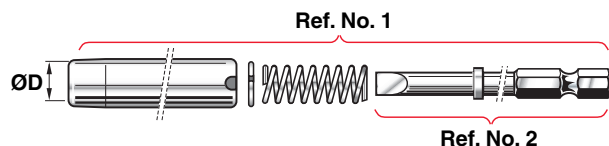
Ref. No.	Ref. No.	A	B	mm
EXTRA HARD ★★	MEDIUM HARD ★			
XFIB0	FIB0	0.8	3.9	25
XFIB20	FIB20	0.9	5.5	25
XFIB1	FIB1	0.9	4.8	25
XFIB2	FIB2	1.0	5.6	25
XFIB3	FIB3	1.1	6.4	25
XFIB4	FIB4	1.2	7.2	25
XFIB15	FIB15	0.9	6.3	38
XFIB152	FIB152	1.0	7.0	38
XFIB153	FIB153	1.1	7.0	38
LXFIB154	LFIB154	1.2	7.2	38
LXFIB5	LFIB5	1.3	7.2	38
LXFIB6	LFIB6	1.4	9.5	38

Slotted (1/4" hex)



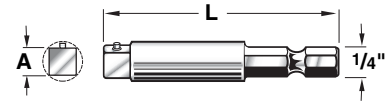
Ref. No.	Ref. No.	A	B	mm
EXTRA HARD ★★	MEDIUM HARD ★			
XF-164	F-164	0.7	3.1	50
XF1645	F-1645	0.7	3.4	50
XF-165	F-165	0.8	3.9	50
XF-166	F-166	0.9	4.7	50
XF-167	F-167	0.9	5.5	50
XF-168	F-168	1.0	6.4	50
XF-169	F-169	1.1	7.0	50
XF-1610	F-1610	1.2	7.9	50
XF-1612	F-1612	1.3	9.1	50
XF-244	F-244	0.7	3.1	75
XF2445	F-2445	0.7	3.4	75
XF-245	F-245	0.8	3.9	75
XF-246	F-246	0.9	4.7	75
XF-247	F-247	0.9	5.5	75
XF-248	F-248	1.0	6.4	75
XF-249	F-249	1.1	7.0	75
XF-250	F-250	1.2	7.9	75
XF-2512	F-2512	1.3	9.1	75
XF344	F-344	0.7	3.1	90
XF3445	F-3445	0.7	3.4	90
XF345	F-345	0.8	3.9	90
XF346	F-346	0.9	4.7	90
XF347	F-347	0.9	5.5	90
XF348	F-348	1.0	6.4	90
XF350	F-350	1.1	7.0	90
XF351	F-351	1.2	7.9	90
XF352	F-352	1.3	9.1	90

Slotted power bit with finder sleeve, complete (1/4" hex)
 Ensemble lame tête fendue / coiffe tournante (1/4" hex.)
 Flachklinge komplett mit Führungshülse (1/4" Skt.)
 Cabeza ranurada con casquillo centrador (1/4" hex)
 Punta a taglio con ricercatore girevole, complete (ex. 1/4")



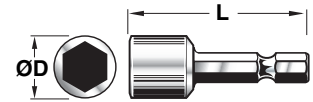
Ref. No. 1	Ref. No. 2	ØD	A	B	mm
FSB4	SFSB4	9.5	0.86	4.9	95
FSB5	SFSB5	9.5	0.90	4.9	95
FSB6	SFSB6	11.0	1.0	6.1	95
FSB8	SFSB8	12.7	1.0	7.4	95
FSB10	SFSB10	14.2	1.2	8.9	95
FSB12	SFSB12	15.8	1.3	10.0	100
FSB14	SFSB14	17.5	1.4	11.6	105
LFSB5	LSFSB5	9.5	0.9	4.9	170
LFSB6	LSFSB6	11.0	1.0	6.1	170
LFSB8	LSFSB8	12.7	1.0	7.4	170
LFSB10	LSFSB10	14.2	1.2	8.9	170

Extensions
 Rallonges
 Steckschlüsselantrieb
 Extensiones
 Prolunghe



Ref. No.	A	L (mm)
7102	1/4	51
7103	1/4	102
7104	1/4	152
7105	3/8	51
7106	3/8	102
7107	3/8	152
7108	1/2	102
7109	1/2	152

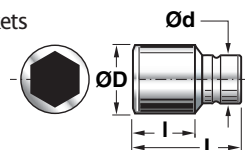
Nutsetters for hex head screws
 Douilles monobloc 6 pans
 Steckschlüssel mit 1/4"
 Skt-Einsteckende



Bocas para tuercas / cabeza hex
 Bussole per viti testa esagonale

Ref. No.	L (mm)	ØD (mm)
STANDARD		
OX1304	4 mm	80
OX1305	5 mm	80
OX1315	5.5 mm	80
OX1306	6 mm	80
OX1307	7 mm	80
OX1308	8 mm	80
OX1309	9 mm	80
OX1310	10 mm	80
OX1311	11 mm	80
OX1312	12 mm	80
OX1313	13 mm	95
OX1314	14 mm	95
MAGNETIC		
NSM5.5M	5.5 mm	41
NSM6M	6 mm	41
NSM8M	8 mm	41
NSM10M	10 mm	48
NSM14	1/4"	41
NSM516	5/16"	41
NSM38	3/8"	45
NSML14	1/4"	65
NSML516	5/16"	65
NSML38	3/8"	65

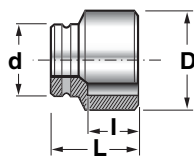
Magnetic 1/4" square drive power sockets
 Douilles 6 pans magnétiques 1/4"




1/4" Kraft-Steckschlüssel (magnetisch)
 Bocas cuadrado 1/4" magnéticas
 Bussole magnetiche, quadro 1/4"

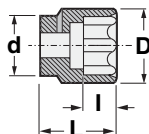
Ref. No.	Ød (mm)	ØD (mm)	l (mm)	L (mm)
6904MPKM	4 mm	13	—	—
6905MPKM	5 mm	13	—	—
6905.5MPKM	5.5 mm	13	9	25
6906MPKM	6 mm	13	9.5	25
6907MPKM	7 mm	13	11	25
6908MPKM	8 mm	13	12	25
6909MPKM	9 mm	13	13	25
6910MPKM	10 mm	13	14.5	25
6911MPKM	11 mm	13	16	25
6912MPKM	12 mm	13	17	25
6913MPKM	13 mm	13	18	25
6906PKM	3/16"	13	—	—
6908PKM	1/4"	13	9.5	25
6909PKM	9/32"	13	11	25
6910PKM	5/16"	13	12	25
6911PKM	11/32"	13	12	25
6912PKM	3/8"	13	14.5	25
6914PKM	7/16"	13	16	25
6916PKM	1/2"	13	18	25


Standard power sockets
 Douilles 6 pans standard
 Standard Kraft-Steckschlüssel
 Bocas estándar
 Bussole a macchina standard



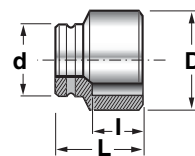
Ref. No.		Ød (mm)	ØD (mm)	l (mm)	L (mm)
1/4"					
S62M4	4.0 mm	13	7.6	4	23
S62M45	4.5 mm	13	8.2	5	23
S62M5	5.0 mm	13	8.8	5	23
S62M55	5.5 mm	13	9.5	5	23
S62M6	6.0 mm	13	10.0	6	23
S62M7	7.0 mm	13	11.3	6	23
S62M8	8.0 mm	13	12.5	7	23
S62M9	9.0 mm	13	13.8	7	23
S62M10	10 mm	13	15.0	7	23
S62M11	11 mm	13	16.3	8	23
S62M12	12 mm	13	17.0	8	23
S62M13	13 mm	13	18.8	8	23
S62M14	14 mm	13	20.0	8	23
S62H316	3/16"	13	8.5	5	23
S62H14	1/4"	13	10.3	6	23
S62H932	9/32"	13	11.3	6	23
S62H516	5/16"	13	12.5	7	23
S62H1132	11/32"	13	13.8	7	23
S62H38	3/8"	13	15.0	7	23
S62H716	7/16"	13	16.3	8	23
S62H12	1/2"	13	18.8	8	23
S62H916	9/16"	13	20.0	8	23
3/8"					
S63M6	6.0 mm	19	11.0	4	30
S63M7	7.0 mm	19	12.5	8	30
S63M8	8.0 mm	19	13.8	8	30
S63M9	9.0 mm	19	15.0	8	30
S63M10	10 mm	19	16.0	8	30
S63M11	11 mm	19	17.5	9	30
S63M12	12 mm	19	19.0	9	30
S63M13	13 mm	22	20.0	9	30
S63M14	14 mm	22	21.0	9	30
S63M15	15 mm	22	22.0	11	30
S63M16	16 mm	22	24.0	11	30
S63M17	17 mm	22	25.0	11	30
S63M18	18 mm	22	26.0	11	30
S63M19	19 mm	22	27.5	11	30
S63M20	20 mm	22	28.0	12	30
S63M21	21 mm	22	30.0	13	30
S63M22	22 mm	23	32.0	13	30
S63H14	1/4"	19	10.0	6	30
S63H516	5/16"	19	12.0	8	30
S63H38	3/8"	19	15.0	8	30
S63H716	7/16"	19	17.0	9	30
S63H12	1/2"	19	20.0	10	30
S63H916	9/16"	20	21.0	10	30
S63H58	5/8"	24	23.0	10	30
S63H1116	11/16"	24	25.0	10	30
S63M19	3/4"	22	27.5	11	30
S63H1316	13/16"	28	30.0	13	30

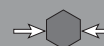
Torx® power sockets
 Douilles 6 pans **Torx®**
Torx® Kraft-Steckschlüssel
Torx® Bocas
 Bussole a macchina **Torx®**



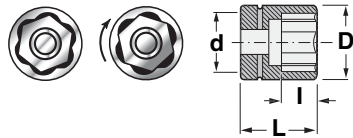
Ref. No.		Ød (mm)	ØD (mm)	l (mm)	L (mm)
1/4"					
SET2E4	E4	13	7.2	4.0	25
SET2E5	E5	13	8.0	4.5	25
SET2E6	E6	13	9.0	5.0	25
SET2E7	E7	13	9.5	6.0	25
SET2E8	E8	13	10.0	6.0	25
3/8"					
SET3E6	E6	19	10.0	5.0	32
SET3E7	E7	19	10.0	6.0	32
SET3E8	E8	19	10.5	6.0	32
SET3E10	E10	19	12.5	7.5	32
SET3E12	E12	19	15.0	8.5	32
SET3E14	E14	19	17.5	10.0	32
SET3E16	E16	19	19.0	11.0	32
1/2"					
SET4E10	E10	25	15.0	7.5	38
SET4E12	E12	25	16.0	8.5	38
SET4E14	E14	25	18.5	10.0	38
SET4E16	E16	25	20.0	11.0	38
SET4E18	E18	25	22.0	12.0	38
SET4E20	E20	30	25.0	13.5	38

Standard power sockets
 Douilles 6 pans standard
 Standard Kraft-Steckschlüssel
 Bocas estándar
 Bussole a macchina standard



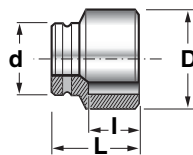
Ref. No.		Ød (mm)	ØD (mm)	l (mm)	L (mm)
1/2"					
S64M8	8.0 mm	25	15.0	9	38
S64M9	9.0 mm	25	16.0	12	38
S64M10	10 mm	25	17.5	12	38
S64M11	11 mm	25	18.7	12	38
S64M12	12 mm	25	20.0	12	38
S64M13	13 mm	25	21.0	12	38
S64M14	14 mm	25	22.5	12	38
S64M15	15 mm	30	23.7	12	38
S64M16	16 mm	30	25.0	12	38
S64M17	17 mm	30	26.0	13	38
S64M18	18 mm	30	27.5	13	38
S64M19	19 mm	30	28.7	13	38
S64M20	20 mm	30	30.0	13	38
S64M21	21 mm	30	30.0	13	38
S64M22	22 mm	30	32.0	13	38
S64M23	23 mm	30	32.0	13	38
S64M24	24 mm	30	35.0	20	45
S64M25	25 mm	30	36.0	20	45
S64M26	26 mm	30	38.0	22	50
S64M27	27 mm	30	38.7	22	50
S64M28	28 mm	30	40.0	22	50
S64M29	29 mm	30	40.0	22	50
S64M30	30 mm	30	42.0	22	50
S64M32	32 mm	30	44.0	28	50
S64H38	3/8"	22	16.0	12	38
S64H716	7/16"	22	18.0	12	38
S64H12	1/2"	22	20.0	12	38
S64H916	9/16"	24	22.0	12	38
S64H58	5/8"	25	25.0	12	38
S64H1116	11/16"	26	26.0	13	38
S64H34	3/4"	28	28.0	13	38
S64H1316	13/16"	30	30.0	13	38
S64H78	7/8"	32	32.0	13	38
S64H1516	15/16"	34	34.0	13	38
S64H1	1	36	36.0	14	38
S64H1-116	1.1/16	38	38.0	16	40
S64H1-118	1.1/8	38	40.0	16	40
S64H1-14	1.1/4	38	44.0	18	40
3/4"					
S66M17	17 mm	44	31.0	12	50
S66M18	18 mm	44	32.0	12	50
S66M19	19 mm	44	33.0	14	50
S66M21	21 mm	44	35.0	16	50
S66M22	22 mm	44	37.0	16	50
S66M23	23 mm	44	38.0	16	50
S66M24	24 mm	44	39.0	16	50
S66M25	25 mm	44	40.0	16	50
S66M26	26 mm	44	41.0	16	50
S66M27	27 mm	44	43.0	16	54
S66M28	28 mm	44	44.0	23	54
S66M29	29 mm	44	45.0	23	54
S66M30	30 mm	44	47.0	23	54
S66M31	31 mm	44	48.0	23	56
S66M32	32 mm	44	49.0	23	56
S66M33	33 mm	44	51.0	23	56
S66M34	34 mm	44	52.0	23	56
S66H916	9/16	38	25.5	12	50
S66H58	5/8	38	27.5	12	50
S66H1116	11/16	38	29.0	12	50
S66H34	3/4	38	30.0	14	50
S66H1316	13/16	38	32.0	16	52
S66H78	7/8	38	34.0	16	52
S66H1516	15/16	38	36.0	16	52
S66H1	1	38	40.0	16	52
S66H1-116	1.1/16	38	40.0	16	52
S66H1-18	1.1/8	42	42.0	20	52
S66H1-14	1.1/4	44	44.0	20	52
S66H1-516	1.5/16	44	47.0	23	56
S66H1-38	1.3/8	44	50.0	23	56

Surface drive sockets
 Douilles "surface drive"
 Flächentragende
 Steckschlüssel-Einsätze
 Bocas para atornillado
 Bussole a invito



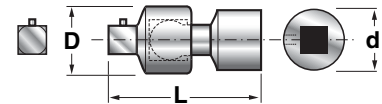
Ref. No.		Ød (mm)	ØD (mm)	l (mm)	L (mm)
■ 3/8"					
SD3M8	8 mm	19	13.8	8	32
SD3M10	10 mm	19	16.0	8	32
SD3M13	13 mm	22	20.0	9	32
SD3M16	16 mm	22	24.0	11	32
SD3M17	17 mm	22	25.0	11	32
SD3M18	18 mm	22	26.0	11	32
SD3M19	19 mm	22	28.0	11	32
SD3H38	3/8"	19	15.5	8	32
SD3H716	7/16"	19	17.5	9	32
SD3H12	1/2"	22	20.0	9	32
SD3H916	9/16"	22	22.0	11	32
SD3H58	5/8"	22	24.0	11	32
SD3H1116	11/16"	22	26.0	11	32
SD3H34	3/4"	22	28.0	11	32
■ 1/2"					
SD4M13	13 mm	25	21	12	38
SD4M16	16 mm	30	25	12	38
SD4M17	17 mm	30	26	13	38
SD4M18	18 mm	30	27.5	13	38
SD4M19	19 mm	30	28.5	13	38
SD4M21	21 mm	30	30.0	13	38
SD4M22	22 mm	30	32.0	13	38
SD4M24	24 mm	30	35.0	20	45
SD4H38	3/8"	25	17.0	12	38
SD4H716	7/16"	25	18.7	12	38
SD4H12	1/2"	25	21.0	12	38
SD4H916	9/16"	25	23.0	12	38
SD4H58	5/8"	30	25.0	12	38
SD4H1116	11/16"	30	27.0	13	38
SD4H34	3/4"	30	28.7	13	38
SD4H1316	13/16"	30	30.0	13	38
SD4H78	7/8"	30	32.0	13	38
SD4H1516	15/16"	30	35.0	20	45

12 point sockets
 Douilles 12 pans
 12-Punkt-Steckschlüssel
 Boca de 12 caras
 Bussola esagonale a 12 punti



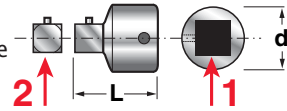
Ref. No.		Ød (mm)	ØD (mm)	l (mm)	L (mm)
■ 1/2"					
S124M10	10 mm	24	17	12	38
S124M11	11 mm	24	18	12	38
S124M12	12 mm	24	19	12	38
S124M13	13 mm	24	20	12	38
S124M14	14 mm	24	22	12	38
S124M15	15 mm	24	24	12	38
S124M16	16 mm	24	24	12	38
S124M17	17 mm	26	26	13	38
S124M18	18 mm	26	26	13	38
S124M19	19 mm	28	28	13	38
S124M21	21 mm	30	30	13	38
S124M22	22 mm	32	32	13	38
S124M23	23 mm	32	32	13	38
S124M24	24 mm	34	34	19	45

Power universal joints
 Cardans
 Hochleistungs-
 Kugelgelenke
 Juntas universales
 Snodi



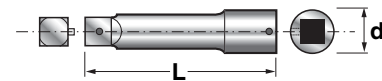
Ref. No.		Ød (mm)	L (mm)	g (g)
J2	1/4"	16	43	30
J3	3/8"	24	50	110
J4	1/2"	32	60	200
J6	3/4"	44	105	590

Power socket adapters
 Adaptateurs
 Hochleistungs-Reduzier-Einsätze
 Adaptadores de boca
 Riduzioni a macchina



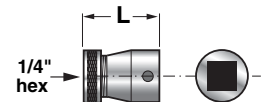
Ref. No.			Ød (mm)	L (mm)
A2F3M	1/4"	3/8"	13.6	26
A3F4M	3/8"	1/2"	22.0	36
A3F2M	3/8"	1/4"	22.0	32
A4F3M	1/2"	3/8"	25.0	38
A4F6M	1/2"	3/4"	30.0	48
A6F4M	3/4"	1/2"	44.0	56
A6F8M	3/4"	1"	44.0	63

Power driver extensions
 Rallonges
 Hochleistungs-
 Verlängerungen
 Extensiones
 Prolunghe



Ref. No.		Ød (mm)	L (mm)
E250MM	1/4"	13	50
E2100MM	1/4"	13	100
E2150MM	1/4"	13	150
E375MM	3/8"	19	75
E3150MM	3/8"	19	150
E3250MM	3/8"	19	250
E475MM	1/2"	25	75
E4125MM	1/2"	25	125
E4175MM	1/2"	25	175
E4250MM	1/2"	25	250
E6175MM	3/4"	44	175
E6250MM	3/4"	44	250
E6330MM	3/4"	44	330

Bit holders
 Adaptateurs porte-embouts
 Klingenhalter
 Portapuntas
 Portapunte



Ref. No.		L (mm)
STANDARD		
631-1	1/4	50
38BH14	3/8	38
MAGNETIC		
M-631-2	1/4	51
M38BH14	3/8	69